

CTCF

Catalog Number:26354

Gene Symbol: CTCF; MRD21

Description: Anti-CTCF Mouse Monoclonal Antibody

Background: Transcriptional repressor CTCF also known as 11-zinc finger protein or CCCTC-binding factor is a transcription factor that in humans is encoded by the CTCF gene. CTCF is involved in many cellular processes, including transcriptional regulation, insulator activity, recombination and regulation of chromatin architecture.

Immunogen: A synthetic peptide from the internal region of CTCF protein, human origin.

Tested Applications: ELISA, WB, IHC, IF

Recommended Dilutions:

ELISA: 1:1000-1:5000

WB: 1:500-1:1000

IF: 1:50-1:100

IHC: 1:50-1:100

Concentration: 0.5 mg/ml

Host: Mouse

Clonality: Monoclonal

Isotype: IgG

Purity: Purified from ascites

Format: Liquid

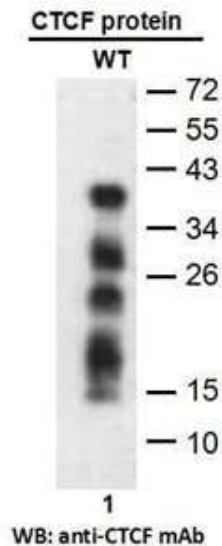
Preservative: No

Constituents: PBS (without Mg²⁺ and Ca²⁺), pH7.4, 150 mM NaCl, 50% glycerol

Species Reactivity: Anti-CTCF antibody recognizes CTCF of vertebrates.

Storage Conditions: Store at -20°C. Avoid freeze / thaw cycles.

Western blot:



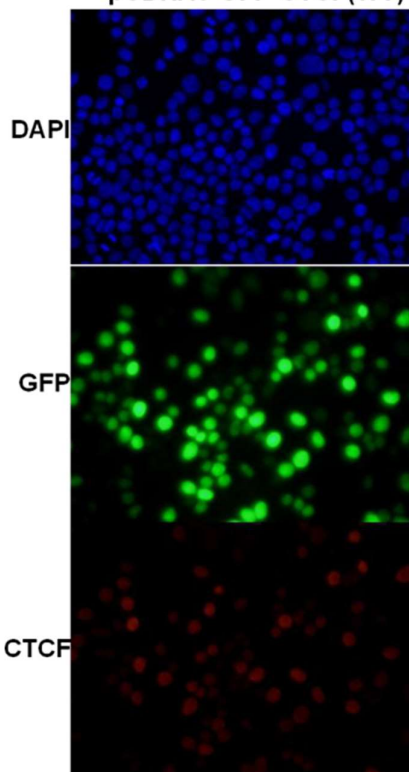
Western blot analysis of recombinant CTCF proteins.

Purified His-tagged CTCF protein (lane 1) was blotted with anti-CTCF monoclonal antibody (Cat. # 26354).

FOR RESEARCH USE ONLY. NOT FOR DIAGNOSTIC APPLICATIONS

Immunofluorescence:

pCDNA3-GFP-CTCF(WT)



Immunofluorescence of cells expressing CTCF protein with anti-CTCF antibody.

HEK293T cells was transfected with pCDNA3-GFP-CTCF plasmid, then fixed and stained with anti-CTCF monoclonal antibody (Cat. # 26354).

FOR RESEARCH USE ONLY. NOT FOR DIAGNOSTIC APPLICATIONS